

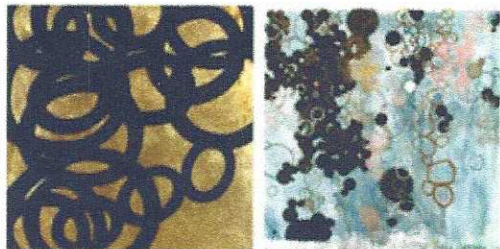


[Back to: Arts » Home](#)

Arts

Circles abound at Piano Factory Gallery

by Bessie King
MySouthEnd.com Contributor
Wednesday Mar 18, 2009



Piano Factory story (page 8): The Piano Factory Gallery welcomed Andrea Raynor and Mary Hughes this month for its exhibition "Recent Work." Both untitled pieces above (the left is Raynor's, the right is Hughes') utilize circles, a common trait of their work currently on display at the gallery until March 29.

Circles seemed to be the theme Friday night, March 13 at The Piano Factory Gallery, 791 Tremont Street, where Andrea Raynor and Mary Hughes presented their month-long exhibit *Recent Work*. Even though the two Northeastern University professors used shapes everyone can recreate, their circles managed to look much more impressive.

"I love them, who knew circles could be so fun and expressive?" said Amy Sousa, a Back Bay resident.

Indeed, starting with Hughes' circles filled with color and followed with Raynor's large black-on-gold ovals, each piece gave the approximately 80 guests who attended the opening space to imagine.

Although the artists "did not collaborate while making the art, the finished pieces complemented each other in a dynamic way," said Mitch Weiss, director of the gallery.

In Hughes' pieces the circles she represents range from small to medium in size and vary in colors. One piece can have a blue background and be filled with circles in black, copper, white, pink, or gray that help one visualize anything from grape vines to sea plants while another using rich gold shades seems tapestry-like because of the texture it presents.

"What I like most is doing it, the discovery of starting a new body of work, seeing where it leads," said Hughes. "I love working with color and just being immersed in the process. I often start work thinking I know exactly what it will look like and I'm almost never right. I consider myself to be someone very interested in formal issues such as composition, value/color relationships, spatial relationships. But I also want the works to have a meditative quality. I want the viewer to have a lot to look at and discover. The artist can never really control how the viewer will interpret a work."

Each of her paintings was made on a mid-sized canvas with layers of watercolor topped with pencil pastel and charcoal. Hughes' pieces are small in size, but managed not to be overshadowed by Raynor's larger, approximately six-foot tall pieces.

Raynor's circles are equally big to compete with the vastness of the canvas. However, she sticks to only two colors—a luminous gold that serves as a background to her circles, painted in black. Each line is thick, intertwining with the last to make a connected set of circles that can reveal the silhouette of a body, face, or giant martini olives.

Perhaps the best attribute of the exhibit was the freedom of the two artists' pieces. Without any explicit theme or meaning, the dozens in attendance were able to wonder freely and see whatever they wanted to see.

Most Popular This Week

1. Higginson finally kicks off his campaign at Tremont 647
2. Michlewitz opens South End headquarters
3. 'Is That Yours?' captivates at Club Café
4. Another South Ender enters 3rd Suffolk race
5. Looking for a place at the table

Upcoming Events

- 3.21 Boston Prime Timers' March Meeting
- 3.21 HEALTHY ST. PATRICK'S DAY FROM IRISH IMMIGRATION CENTER
- 3.21-22 'Brides on a Budget' at Morgan Memorial Goodwill Industries
- 3.21 CITI Performing Arts Center Presents a City Spotlights Neighborhood
- 3.22 McCrea holding TEA Party at Red Fez
- 3.28 Cultura Viva!
- 3.28 From Symphonies to Suffrage: Music of Amy Beach's Boston
- 3.30 Preschool Films
- 3.30 Toddler Story Hour
- 4.3-9 First Fridays coming soon!

Quick Poll

Should Post-Exposure Prophylaxis be utilized further to curb the spread of HIV? (See "Post-Exposure Prophylaxis offers a second chance at HIV prevention," 3/11, for more information.)

- Yes, it's a chance to save lives
- No, people will use it recklessly and it won't lower HIV infections
- Maybe, let people decide for themselves if they feel it's appropriate
- No opinion; it's none of my business

[Vote!](#)

Columns

Boston and Beyond
Time to rein in the police and

HUBB
PLUMBING & MECHANICAL
SETTING THE STANDARD IN THE SERVICE INDUSTRY™
REAL 24 HOUR SERVICE, 7 DAYS/WEEK
1-866-HUBBPLUMBING
WWW.HUBBPLUMBING.COM

Tremont Dental Care
We are committed to your satisfaction.

Club Café
209 COLUMBUS AVE.
Boston, MA 02116
617.536.0966
Club Café
209 BOSTON
bistro bar & lounge

"The circles come out of wanting the content of the pieces to feel like a large physical gesture. The circles seem like a natural gesture anyone would make," said Raynor, who at 5'5" needs a ladder to paint each piece. "Making abstract work definitely leads to very wide interpretation, which is good. I think the circle is one of the most basic forms you can make. Seeing what you can make out of a such a reduced or basic form in a large scale has been an engaging challenge for me."

Recent Work will remain on display at the gallery until March 29. For more information visit www.galleryatthepianofactory.org.

[Back to: Arts » Home](#)

COMMENTS

[Add New Comment](#)

support Chairman Costello's reform efforts

City Streets

Common questions

Dog Lady

Office politics enter the canine cavity

In Business

Alphabet Arm doing well despite recession

La Palabra en la Calle

Examinando la Pregunta 2 un mes después

Neighborhood News

Ben Watson stops by the Blackstone

NO COMMENT?!

Mayor Menino's Ponzi scheme

Nonprofit Sector

South Ender Karen Schwartzman appointed to Pine Street Inn Board of Directors

Police Beat

Belligerence

Political Notes

Southie gathering brings Linehan's song and mayoral dance

The Boston Sports Beat

Pats looking like prohibitive title favorites if Peppers reports are true

Youth Voices

Dear Juju

Copyright © 2008
South End News Inc. / All Rights Reserved