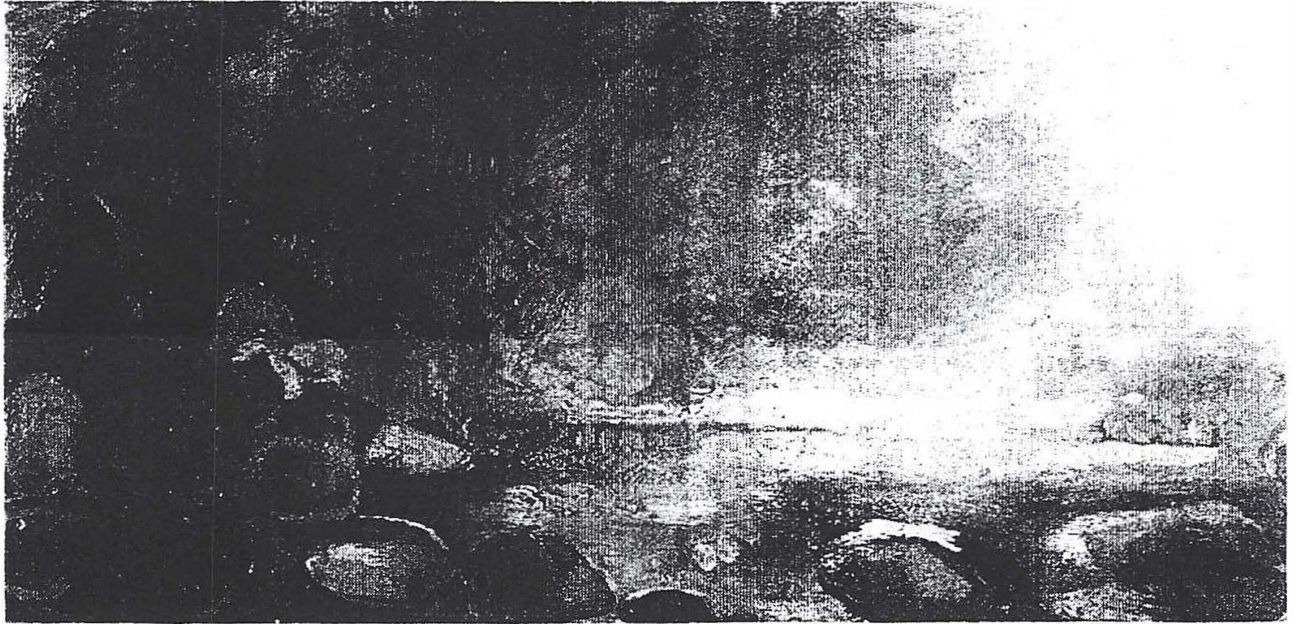


THURSDAY 7/18/02

THE BOSTON GLOBE

Globe West 5

Calendar



"Approaching Storm," an oil painting by Mary Hughes, on display at the Starr Gallery, Newton.

Beyond the boundaries of landscape painting

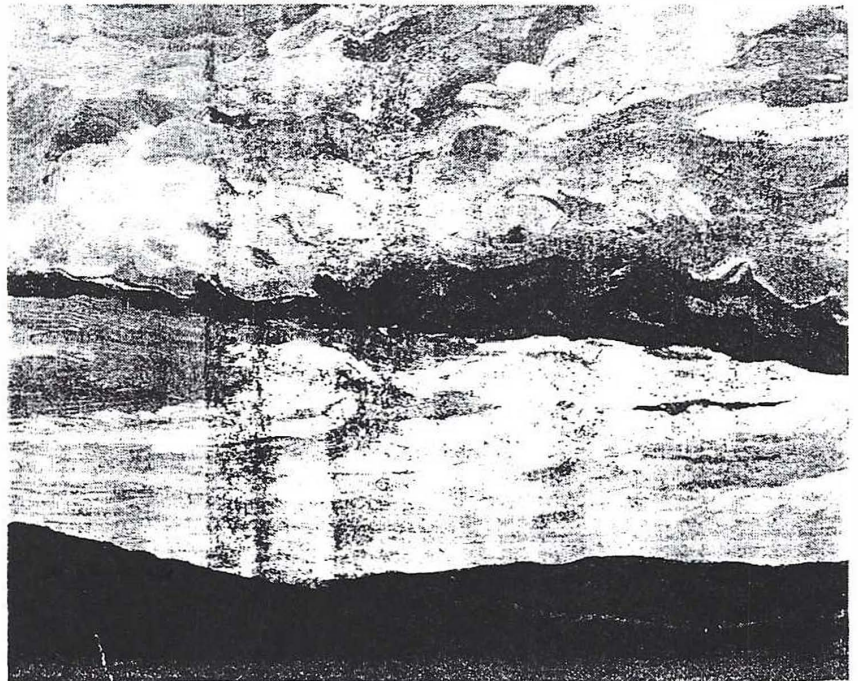
Is landscape made up of just the physical, natural world? Or can it exist in other realms, acting as a filter for memory, history, and impressions?

"Between Solace and Awe: Beyond the Landscape" addresses these questions in paintings, prints, and photographs by 11 artists. In their work, the space, form, color, light, and atmosphere of the landscape become vehicles for expressing personal meaning.

✧ In Mary Hughes's paintings, landscape imagery becomes mythical and otherworldly, while Beverly Barber explores painting as an act of remembering. The nine other artists find their own ways to stretch the boundaries of the landscape.

The show runs through Aug. 30 at the Starr Gallery in the Leventhal-Sidman Jewish Community Center at 333 Nahanton St. in Newton. Weekend hours are 10 a.m. to 7 p.m. today, 10 a.m. to 2 p.m. Friday, and 11 a.m. to 4 p.m. Sunday. Admission is free. Call 617-558-6484, ext. 485.

MILV. ADOMIZIO



"Influx Trigger," oil on wood, by Beth Balliro.